



User's Manual

# Magic Wand Laptop



**vtech**<sup>®</sup>

Visit the Disney Web site at [www.disney.com](http://www.disney.com)

© Disney  
All rights reserved.

© 2009 VTech  
Printed in China  
91-002364-001-000 (美)

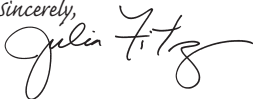
Dear Parent,

At **VTech**<sup>®</sup>, we know how important the first day of school is for your child. To help prepare preschoolers for this important event, **VTech**<sup>®</sup> has developed the **Preschool Learning**<sup>™</sup> series of interactive toys.

**Preschool Learning**<sup>™</sup> features fun characters and inviting school themes that use technology to capture a child's attention and teach important preschool skills like spelling, counting and the alphabet. These vital skills are taught in a way that's both fun and highly engaging to maintain a child's interest. Children will also be introduced to fun school subjects such as art class, music class and even recess! With **Preschool Learning**<sup>™</sup>, learning is fun from day one!

At **VTech**<sup>®</sup>, we know that a child has the ability to do great things. That's why all of our electronic learning products are uniquely designed to develop a child's mind and allow them to learn to the best of their ability. We thank you for trusting **VTech**<sup>®</sup> with the important job of helping your child learn and grow!

Sincerely,



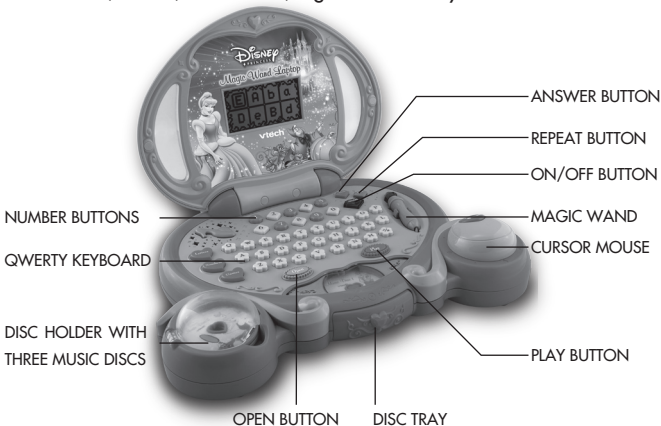
Julia Fitzgerald  
Vice President, Marketing  
VTech Electronics, NA

To learn more about the **Preschool Learning**<sup>™</sup> and other **VTech**<sup>®</sup> toys, visit [www.vtechkids.com](http://www.vtechkids.com)

# INTRODUCTION

Thank you for purchasing the **VTech® Magic Wand Laptop!**

Join Cinderella on a magical learning journey. Cinderella will help guide you through twelve engaging activities to learn age-appropriate curriculum. The magic wand and cursor mouse interact with the light-up screen as you learn letters, words, basic math, logic and memory skills and more.



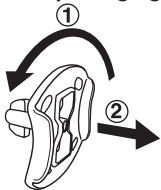
## INCLUDED IN THIS PACKAGE

- One **VTech® Magic Wand Laptop**
- One User's Manual

**WARNING:** All packing materials, such as tape, plastic sheets, wire ties and tags are not part of this toy, and should be discarded for your child's safety.

**NOTE: Please keep User's Manual as it contains important information.**

Unlock the packaging locks:



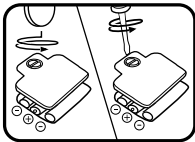
① Rotate the packaging lock 90 degrees counterclockwise.

② Pull out the packaging lock.

## GETTING STARTED

### BATTERY INSTALLATION

1. Make sure the unit is turned **OFF**.
2. Locate the battery cover on the bottom of the unit. Use a coin or screwdriver to loosen the screw.
3. Install 3 new "AA" size (AM-3/LR6) batteries following the diagram inside the battery box. (The use of new alkaline batteries is recommended for maximum performance.)
4. Replace the battery cover and tighten the screw to secure the battery cover.



### BATTERY NOTICE

- Install batteries correctly observing the polarity (+, -) signs to avoid leakage.
- Do not mix old and new batteries.
- Do not mix batteries of different types: alkaline, standard (carbon-zinc) or rechargeable (nickel-cadmium).
- Remove the batteries from the equipment when the unit will not be used for an extended period of time.

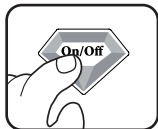
- Always remove exhausted batteries from the equipment.
- Do not dispose of batteries in fire.
- Do not attempt to recharge ordinary batteries.
- The supply terminals are not to be short-circuited.
- Only batteries of the same and equivalent type as recommended are to be used.

**WE DO NOT RECOMMEND THE USE OF RECHARGEABLE BATTERIES.**

## PRODUCT FEATURES

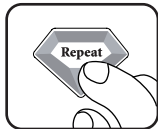
### 1. ON/OFF BUTTON

Turn **ON** your **VTech® Magic Wand Laptop** by pressing the **ON/OFF BUTTON**. Press again to turn the unit **OFF**.



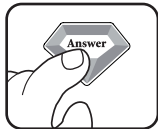
### 2. REPEAT BUTTON

Press the **REPEAT BUTTON** to hear an instruction or question again.



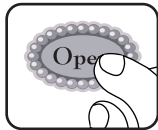
### 3. ANSWER BUTTON

Press the **ANSWER BUTTON** to be shown the correct answer in related activities.



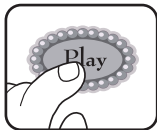
### 4. OPEN BUTTON

Press the **OPEN BUTTON** to open the disc tray.



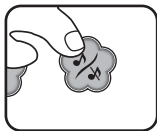
## 5. PLAY BUTTON

Press the **PLAY BUTTON** during an activity to play the music disc in the disc tray.



## 6. MUSIC ON/OFF BUTTON

Press the **MUSIC ON/OFF BUTTON** to turn the background music **ON** or **OFF**.



## 7. AUTOMATIC SHUT-OFF

To preserve battery life, the **VTech® Magic Wand Laptop** will automatically turn off after several minutes without input. The unit can be turned on again by pressing the **ON/OFF BUTTON**.

# ACTIVITIES

## MODE 1: LETTERS

### Letter Pairs

Four small letters and their corresponding capital letters will be shown on the screen. Use the **MAGIC WAND** or **CURSOR MOUSE** to match the capital and small letters.

### Letter Order

Some letters will be shown on a string of pearls but there is a letter missing in the sequence. Press the correct **LETTER BUTTON** to complete the sequence so that the letters are in alphabetical order.

### Missing Letter

A word will be shown but one of the letters is missing. Use the **MAGIC WAND** or press a **LETTER BUTTON** or use the **CURSOR MOUSE** to complete the word.

## MODE 2: NUMBERS

### Counting

Some gems will be shown on the screen. Count the gems and press the correct **NUMBER BUTTON** to answer.

### Number Order

Some numbers will be shown on the screen, but there is a number missing in the sequence. Press the correct **NUMBER BUTTON** to complete the sequence so that the numbers are in numerical order.

### Magical Math

An equation will be show on the screen. Press the correct **NUMBER BUTTON** to answer the equation.

## MODE 3: GAMES

### Pretty Puzzle

To help Cinderella mend the broken plate, use the **MAGIC WAND** or **CURSOR MOUSE** to rearrange the pieces to complete the picture.

### Gentler Dance

To follow Cinderella's dance steps, move the **CURSOR MOUSE** in the direction of the arrows shown on the left side of the screen.

### Choose a Shoe

A shoe will be shown at the top of the screen. Find the matching shoe underneath by using the **CURSOR MOUSE** or **MAGIC WAND** to scroll through the options, then press **ENTER** or use the **MAGIC WAND** to select your answer.

## MODE 4: MUSIC

### Three Music Discs

There are three music discs in the **DISC HOLDER**. Press the **OPEN BUTTON** to open the **DISC TRAY** and insert a disc. Close the **DISC TRAY**. Four song options will be shown on the screen for each disc. Choose a song using the **MAGIC WAND** or the **CURSOR MOUSE**. Press the **PLAY BUTTON** during an activity to play the music disc in the **DISC TRAY**.

## CARE & MAINTENANCE

1. Keep the unit clean by wiping it with a slightly damp cloth.
2. Keep the unit out of direct sunlight and away from any direct heat source.
3. Remove the batteries when the unit is not in use for an extended period of time.
4. Do not drop the unit on hard surfaces and do not expose the unit to moisture or water.

## TROUBLESHOOTING

If for some reason the program/activity stops working or malfunctions, please follow these steps:

1. Please turn the unit OFF.
2. Interrupt the power supply by removing the batteries.
3. Let the unit stand for a few minutes, then replace the batteries.
4. Turn the unit ON. The unit should now be ready to play again.
5. If the product still does not work, replace with a new set of batteries.

If the problem persists, please call our Consumer Services Department at 1-800-521-2010 in the U.S. or 1-877-352-8697 in Canada and a service representative will be happy to help you.



## Note:

This equipment has been tested and found to comply with the limits for a Class B digital device, pursuant to Part 15 of the FCC Rules. These limits are designed to provide reasonable protection against harmful interference in a residential installation. This equipment generates, uses and can radiate radio frequency energy and, if not installed and used in accordance with the instructions, may cause harmful interference to radio communications.

However, there is no guarantee that interference will not occur in a particular installation.

If this equipment does cause harmful interference to radio or television reception, which can be determined by turning the equipment off and on, the user is encouraged to try to correct the interference by one or more of the following measures:

- Reorient or relocate the receiving antenna.
- Increase the separation between the equipment and receiver.
- Connect the equipment into an outlet on a circuit different from that to which the receiver is connected.
- Consult the dealer or an experienced radio/TV technician for help

**Caution :** Changes or modifications not expressly approved by the party responsible for compliance could void the user's authority to operate the equipment.

### IMPORTANT NOTE

Creating and developing **VTech**<sup>®</sup> products is accompanied by a responsibility that we at **VTech**<sup>®</sup> take very seriously. We make every effort to ensure the accuracy of the information, which forms the value of our products. However, errors sometimes can occur. It is important for you to know that we stand behind our products and encourage you to call our Consumer Services Department at 1-800-521-2010 in the U.S. or 1-877-352-8697 in Canada with any problems and/or suggestions that you might have. A service representative will be happy to help you.