



Parent's Guide

Super Learning Headquarters



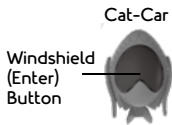
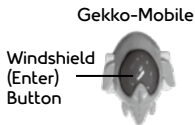
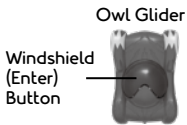
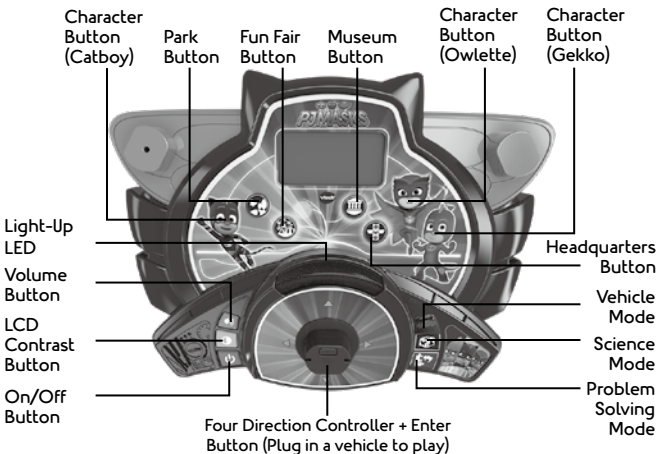
©2018 Frog Box/Entertainment One UK Limited

91-003508-001 (US)

INTRODUCTION

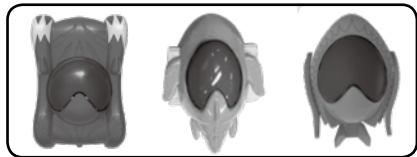
Thank you for purchasing the **VTech® PJ Masks Super Learning Headquarters**. Join the PJ Masks heroes Catboy, Owlette and Gekko to help save the day!

The **PJ Masks Super Learning Headquarters** includes 12 exciting activities that introduce science, matching, problem solving and more. Choose from three modes of play and plug in the vehicles to control the on-screen action with either the Cat-Car, Gekko-Mobile or Owl Glider. Drive into the night to save the day with the PJ Masks!



INCLUDED IN THIS PACKAGE

- One PJ Masks Super Learning Headquarters
- One parent's guide
- Three PJ Masks vehicles



WARNING:

All packing materials such as tape, plastic sheets, packaging locks, removable tags, cable ties and packaging screws are not part of this toy, and should be discarded for your child's safety.

NOTE: Please keep this parent's guide as it contains important information.

ATTENTION :

Pour la sécurité de votre enfant, débarrassez-vous de tous les produits d'emballage tels que rubans adhésifs, feuilles de plastique, attaches, étiquettes et vis d'emballage. Ils ne font pas partie du jouet.

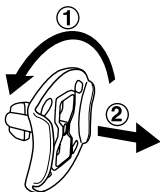
NOTE : Il est conseillé de conserver ce guide des parents car il comporte des informations importantes.

WARNING:

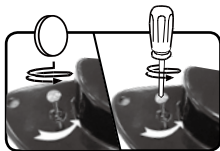
The cable tie is not part of this toy and should be removed and discarded for your child's safety.



Unlock the packaging locks:



- ① Rotate the packaging lock 90 degrees counterclockwise.
- ② Pull out the packaging locks.

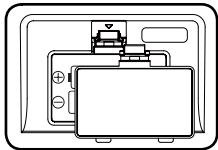


- There are packaging locks located on the vehicles:
- ① Use a coin or a screwdriver to loosen the screws.
 - ② Pull out the screws from the unit and discard them.

GETTING STARTED

BATTERY INSTALLATION

1. Make sure the unit is turned **OFF**.
2. Locate the battery cover on the bottom of the unit.
3. Open the battery cover with a screwdriver.
4. Install 2 new AA (AM-3/LR6) batteries into the compartment as illustrated. (The use of new alkaline batteries is recommended for maximum performance.)
5. Replace the battery cover.



BATTERY NOTICE

- Use new alkaline batteries for maximum performance.
- Use only batteries of the same or equivalent type as recommended.
- Do not mix different types of batteries: alkaline, standard (carbon-zinc) or rechargeable, or new and used batteries.
- Do not use damaged batteries.
- Insert batteries with the correct polarity.
- Do not short-circuit the battery terminals.
- Remove exhausted batteries from the toy.
- Remove batteries during long periods of non-use.
- Do not dispose of batteries in fire.
- Do not charge non-rechargeable batteries.
- Remove rechargeable batteries from the toy before charging (if removable).
- Rechargeable batteries are only to be charged under adult supervision.

PRODUCT FEATURES

1. On/Off Button

To turn the unit on, press the **On/Off Button**. Press the **On/Off Button** again to turn the unit off.

2. LCD Contrast Button

Plug in one of the vehicles on the controller to adjust screen contrast. Move to the left to reduce contrast, or move to the right to increase contrast and then press the **Windshield** to confirm.

3. Volume Button

Plug in one of the vehicles on the controller to adjust the volume. Move to the left to reduce the volume, or move to the right to increase the volume level. Then press the **Windshield** to confirm.

4. Mode Selector

Slide the **Mode Selector** to choose one of the three modes.



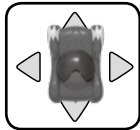
5. Four Location Buttons

Press one of the **Location Buttons** to choose a game to play.



6. Four Direction Controller + Enter Button (the Windshield)

Move the vehicle to navigate on the screen or to select an option. Then press the **Windshield** to confirm the selection.



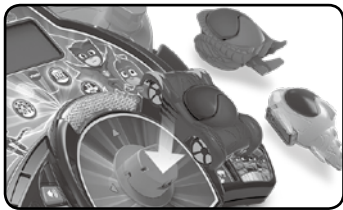
7. Three Character Buttons

Press the three **Character Buttons** (Catboy, Owlette, Gekko) on the unit to play an animation and a fun phrase,



8. Catboy's Vehicle - Cat-Car / Gekko's Vehicle - Gekko-Mobile / Owlette's Vehicle - Owl Glider

Plug in one of the three PJ Masks vehicles as shown in the picture to start playing. Please ensure that it is properly snapped into place.



9. Light-Up LED

The LED will light up in multiple colors.



10. Automatic Shut Off

To preserve battery life, the **PJ Masks Super Learning Headquarters** will automatically turn off after several minutes of inactivity. The unit can be turned on again by pressing the **On/Off Button**. The unit will also automatically turn off when the batteries are very low. A warning will be displayed on screen as a reminder to change the batteries.

TO BEGIN PLAY

- Press the **On/Off Button** to turn the unit **On**. A short animation will play and you will be asked to select an activity.
- Plug in a vehicle to start. Slide the **Mode Selector** to choose a mode of play. Then press one of the **Location Buttons** on the unit to enter a game.
- Press one of the **Character Buttons** on the unit to play an animation and a fun phrase of that character.

ACTIVITIES

The **PJ Masks Super Learning Headquarters** offers three modes with a total of 12 activities to play.

Vehicle Mode



Activity 1: Alphabet Balls

Luna Girl is catching butterflies to use for an evil plan. Race through the park with the PJ Masks to stop her while learning about letters as you go!

During the racing game, move the vehicle controller to avoid the obstacles.

In the learning game, use the vehicle to sort the balls into the correct alphabetical order then press the **Windshield** to confirm.

There are three levels for both the speed of the obstacles in the racing game and the number of alphabet balls in the learning game.





Activity 2: Number Chase

Oh no! The Fairground Flyer train has been hijacked by Romeo! Help the PJ Masks chase after him and learn about numbers to stop the Tracker Whacker!



During the racing game, move the vehicle controller to collect ten branches.

In the learning game, use the vehicle to choose the correct number of branches then press the **Windshield** to confirm.

There are three levels for both the speed of the obstacles in the racing game and the number of branches to collect in the learning game.



Activity 3: Beginning Letters

Help the PJ Masks chase after Night Ninja to get back stolen artwork. Use your spelling skills to track down Night Ninja.



During the racing game, move the vehicle controller to avoid the obstacles.

In the learning game, use the vehicle to find the beginning letter of each object, then press the **Windshield** to confirm.

There are three levels for both the speed of the obstacles in the racing game and the variety of letters that appear in the learning game.



Activity 4: Shape Puzzle

Complete the patterns to help the PJ Masks fix their vehicles.

Use the vehicle to choose a shape, then press the **Windshield** to confirm.



There are three levels of difficulty for the patterns.

Science Mode



Activity 1: Butterfly Life Cycle

Learn about the butterfly life cycle and help a butterfly grow.

Choose a caterpillar, then feed and play with it. Select food that the caterpillar would like to help it grow. Use the vehicle to choose then press the **Windshield** to confirm.



Activity 2: Fruit or Vegetable?

At the fun fair, the fruit and vegetables have been mixed up. Sort the food into the correct categories.

Use the vehicle to choose the correct fruit or vegetable then press the **Windshield** to confirm.



Activity 3: Around the World

At the museum, learn facts about countries and cities around the world.

Use the vehicle to choose then press the **Windshield** to confirm.



Activity 4: Animal Footprints

The HQ surveillance camera has picked up some animal shadows. Help the PJ Masks match the footprints and shadows with the correct animal.

Use the vehicle to choose the correct footprints then press the **Windshield** to confirm.



Problem Solving Mode



Activity 1: Fix the Pipes

Luna Girl has broken the town water fountain pipes in order to fill up her new paddling pool. Help the PJ Masks select the correct shape of pipe to connect the pipes.

Use the vehicle to choose then press the **Windshield** to confirm.



Activity 2: Hide and Seek

Night Ninja has stolen some musical instruments and hidden them in a box at the Fun Fair.

A short tune of the musical instrument will play in the box, then the boxes will be swapped around. Find the correct box containing the musical instrument. Use the vehicle to choose then press the **Windshield** to confirm.



Activity 3: Picture Matching

Romeo has broken all the paintings in the museum. Fix the paintings by matching the pictures to the shape.

Use the vehicle to choose then press the **Windshield** to confirm.



Activity 4: Headquarters Code

Watch for the sequence of arrow flashes, remember the order, then repeat the sequence by moving the vehicle in the same order. Use the vehicle to play.



CARE & MAINTENANCE

1. Keep the unit clean by wiping it with a slightly damp cloth.
2. Keep the unit out of direct sunlight and away from any direct heat sources.
3. Remove the batteries when the unit is not in use for an extended period of time.
4. Do not drop the unit on a hard surface and do not expose the unit to excess moisture.

TROUBLESHOOTING

If for some reason the program/activity stops working, please follow these steps:

1. Turn the unit **OFF**.
2. Interrupt the power supply by removing the batteries.
3. Let the unit stand for a few minutes, then replace the batteries.
4. Turn the unit back **ON**. The unit will now be ready to play again.
5. If the unit still does not work, replace with an entire set of new batteries.

If the problem persists, please call our Consumer Services Department at 1-800-521-2010 in the U.S. or 1-877-352-8697 in Canada, or by going to our website at vtechkids.com and filling out our Contact Us form located under the Customer Support link. A service representative will be happy to help you.

IMPORTANT NOTE:

Creating and developing VTech® products is accompanied by a responsibility that we at VTech® take very seriously. We make every effort to ensure the accuracy of the information, which forms the value of our products. However, errors sometimes can occur. It is important for you to know that we stand behind our products and encourage you to call our Consumer Services Department at 1-800-521-2010 in the U.S. or 1-877-352-8697 in Canada, or by going to our website at vtechkids.com and filling out our Contact Us form located under the Customer Support link with any problems and/or suggestions that you might have. A service representative will be happy to help you.

Note: This equipment has been tested and found to comply with the limits for a Class B digital device, pursuant to Part 15 of the FCC Rules. These limits are designed to provide reasonable protection against harmful interference in a residential installation. This equipment generates, uses and can radiate radio frequency energy and, if not installed and used in accordance with the instructions, may cause harmful interference to radio communications. However, there is no guarantee that interference will not occur in a particular installation. If this equipment does cause harmful interference to radio or television reception, which can be determined by turning the equipment off and on, the user is encouraged to try to correct the interference by one or more of the following measures:

- Reorient or relocate the receiving antenna.
- Increase the separation between the equipment and receiver.
- Connect the equipment into an outlet on a circuit different from that to which the receiver is connected.
- Consult the dealer or an experienced radio/TV technician for help.

THIS DEVICE COMPLIES WITH PART 15 OF THE FCC RULES. OPERATION IS SUBJECT TO THE FOLLOWING TWO CONDITIONS:

- (1) THIS DEVICE MAY NOT CAUSE HARMFUL INTERFERENCE, AND
- (2) THIS DEVICE MUST ACCEPT ANY INTERFERENCE RECEIVED, INCLUDING INTERFERENCE THAT MAY CAUSE UNDESIRE OPERATION.

CAN ICES-3 (B)/NMB-3(B)

Caution: Changes or modifications not expressly approved by the party responsible for compliance could void the user's authority to operate the equipment.



CLASS 1
LED PRODUCT

**Visit our website for more
information about our products,
downloads, resources and more.**

vtechkids.com

**Read our complete warranty policy online at
*vtechkids.com/warranty***



VTech and the VTech logo TM & © 2018 VTech Holdings Limited.

All rights reserved.

Printed in China.

91-003508-001 (S)