

vtech[®]

User's Manual

Soothe & Surprise Nature Light™



© 2005 VTech

Printed in China

91-02125-000 (美)

Dear Parent:

*Ever notice the look on your baby's face when they learn something new through their own discovery? These self-accomplished moments are a parent's greatest reward. To help fulfill them, VTech® created the **Infant Learning** series of toys.*

*These unique interactive learning toys directly respond to what children do naturally – play! Using innovative technology, these toys react to baby's interactions, making each play experience fun and unique as they learn age-appropriate concepts like first words, numbers, shapes, colors and music. More importantly, VTech®'s **Infant Learning** toys develop baby's mental and physical abilities by inspiring, engaging and teaching.*

At VTech®, we know that a child has the ability to do great things. That's why all of our electronic learning products are uniquely designed to develop a child's mind and allow them to learn to the best of their ability. We thank you for trusting VTech® with the important job of helping your child learn and grow!

Sincerely,

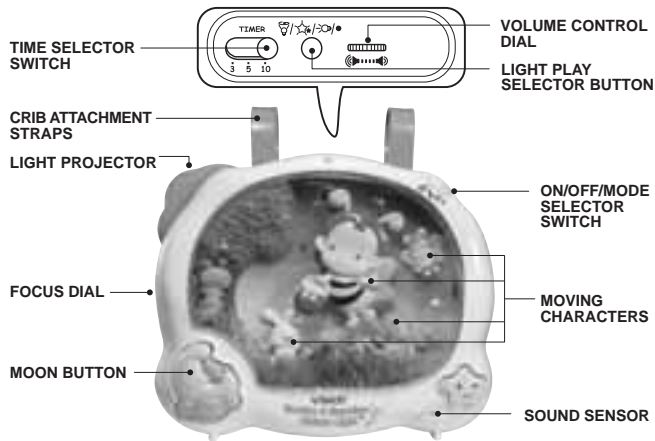
Your Friends at VTech®

*To learn more about **Infant Learning** and other VTech® toys, visit www.vtech.com*

INTRODUCTION

Thank you for purchasing the **VTech® Soothe & Surprise Nature Light™**.

The **VTech® Soothe & Surprise Nature Light™** is a soothing crib light designed for babies birth and up. The **VTech® Soothe & Surprise Nature Light™** uses a combination of soothing classical melodies, nature sounds, songs, and calming light play to help relax baby and send them off to a peaceful slumber. The unit also features a built-in sound sensor that activates soothing melodies when baby awakes. A variety of light play settings, time settings and musical settings allow parents to customize this crib toy to baby's specific needs. Playtime is over, it's time for bed, dreamy time awaits you so lay down your head.



INCLUDED IN THIS PACKAGE

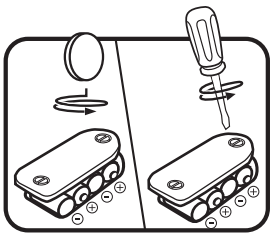
- One VTech® Soothe & Surprise Nature Light™ unit
- Two crib attachment straps
- One instruction manual

WARNING: All packing materials, such as tape, plastic sheets, wire ties and tags are not part of this toy, and should be discarded for your child's safety.

GETTING STARTED

BATTERY INSTALLATION

1. Make sure the unit is turned **OFF**.
2. Locate the battery cover on the back of the unit. Use a coin or screwdriver to loosen the screws.
3. Install 4 new "C" size (LR14) batteries following the diagram inside the battery box. (The use of new alkaline batteries is recommended for maximum performance.)
4. Replace the battery cover and tighten the screws to secure the battery cover.



BATTERY NOTICE

- Install batteries correctly observing the polarity (+, -) signs to avoid leakage.
- Do not mix old and new batteries.
- Do not use batteries of different types.
- Remove batteries from the equipment when the unit will not be used for an extended period of time.
- Do not dispose of batteries in fire.
- Do not attempt to recharge ordinary batteries.
- The supply terminals are not to be short-circuited.
- Only batteries of the same and equivalent type as recommended are to be used.
- Do not mix alkaline, standard (carbon-zinc) or rechargeable (nickel-cadmium) batteries.

WE DO NOT RECOMMEND THE USE OF RECHARGEABLE BATTERIES.

CRIB ATTACHMENT

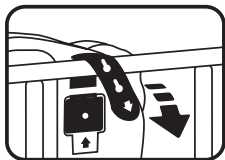
Please Note:

To ensure your child's safety, the assembly of this product is an adult activity, not a child's activity.

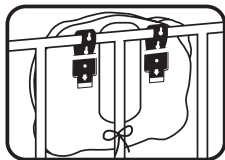
The crib attachment straps allow for easy and secure mounting of the **VTech® Soothe & Surprise Nature Light™** to a crib. Please follow the instructions below carefully and make sure the final assembly is correct. Attach only to cribs with sturdy rails and spindles. Do not attach to playpens with mesh walls.

This crib light is not intended for use as a toy. Please make sure the crib attachment straps are out of reach from children when placed in the crib. Please ensure the crib light is positioned upright with the projection light facing directly upwards.

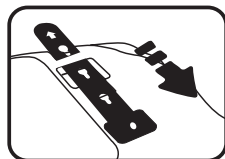
1. Place the unit in the crib bringing both straps over the top rail. Slip the top of the strap under the slot on the back of the unit and secure. Repeat this procedure for the second strap. You can adjust the hanging height by choosing the appropriate hole on the top of each strap.



2. Pull slightly on the unit to make sure both straps have been securely fastened. The unit should be snug against the crib rail. Please check the unit frequently to ensure it is still secure.

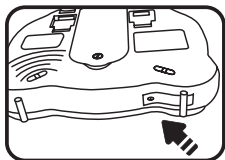


3. For additional use, the unit can be removed from the crib and placed on a dresser. For your child's safety, please ensure that the crib attachment straps have been removed when the unit is not hanging in the crib.

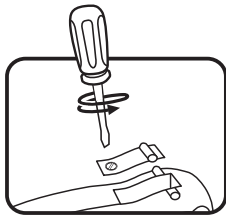


LIGHT BULB REPLACEMENT

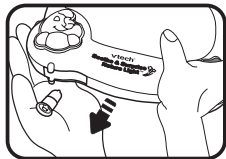
1. To replace the light bulb, locate the light bulb cover on the bottom of the unit.



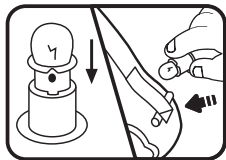
2. Make sure the unit is turned **OFF** (●).
Use a screwdriver to open the cover.



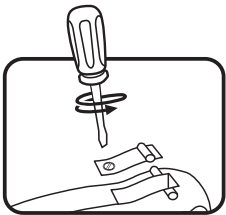
3. Gently remove the old light bulb and the protection ring.



4. Attach the protection ring to the new light bulb. Carefully put the new light bulb into the light bulb socket. The maximum power of the light bulb is 2.4 watt. For best performance, replace with a 2.4 watt, 4.8 volt, 0.3A bulb.



5. Replace the light bulb cover and secure the screw using a screwdriver.



PRODUCT FEATURES

1. ON/OFF/MODE SELECTOR SWITCH

To turn the unit **ON**, slide the **ON/OFF/MODE SELECTOR SWITCH** to the **MELODY MODE** (🎵), the **NATURE SOUND MODE** (🌿), or the **NURSERY MODE** (🍼) position. To turn the unit **OFF**, slide the **ON/OFF/MODE SELECTOR SWITCH** to the **OFF** (●) position.



2. LIGHT PLAY SELECTOR BUTTON

Press the **LIGHT PLAY SELECTOR BUTTON** to select the desired light setting.

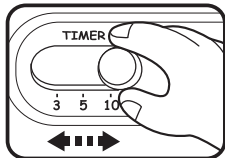
1. Twinkling lights and background lights.
2. Projection light only
3. Background lights only
4. Projection light and twinkling lights
5. No lights
6. Twinkling lights, background lights and projection light




Note: When the unit is first turned on, all the lights will be on.

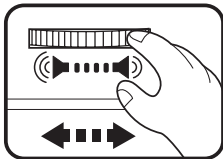
3. TIME SELECTOR SWITCH

Slide the **TIME SELECTOR SWITCH** (3 5 10) to the desired time setting – 3, 5 or 10 minutes.



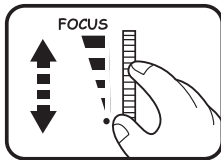
4. **VOLUME DIAL**

Turn the **VOLUME DIAL** (() to the desired volume.



5. **FOCUS DIAL**




Turn the **FOCUS DIAL** to the desired focus of the projected image.




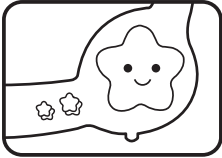
6. **AUTOMATIC SHUT OFF**

To preserve battery life, the **VTech® Soothe & Surprise Nature Light™** will automatically power-down after the pre-set time is reached and there is no input. The unit can be turned on again by pressing the moon button or sliding the on/off/mode selector switch.

ACTIVITIES

- Slide the **on/off/mode selector switch** to turn the unit on. You will hear "It's lullaby time" followed by the related response of the selected mode. In the **MELODY MODE** () , you will hear a song followed by a variety of melodies. In the **NATURE SOUND MODE** () , you will hear a song followed by a variety of peaceful nature sounds. In the **NURSERY MODE** () , you will hear a song followed by a variety of melodies with nature sounds playing in the background. The light play is dependent upon the selected light play setting.



2. Press the **moon button** to hear calming phrases, a song and a variety of melodies in the **MELODY MODE** (🎵). In the **NATURE SOUND MODE** (🌿), you will hear calming phrases, a song and a variety of nature sounds. In the **NURSERY MODE** (👶), you will hear a variety of songs followed by melodies with nature sounds playing in the background. The light play is dependent upon the selected light play setting.
- 
3. In addition to the soothing atmosphere and sounds, the **VTech® Soothe & Surprise Nature Light™** features a built-in sound sensor. Once the selected time setting has finished, the unit will automatically power-down. The sound sensor will re-activate the program if continuous background noise is detected for approximately 7 seconds. Only melodies will be heard. The sound sensor will not activate spoken phrases, songs, lights and motor movement.
- 

MELODY LIST

1. All Through the Night
2. Sweet and Low
3. Brahms' Lullaby
4. Too-Ra-Loo-Ra-Loo-Ral
5. Beautiful Dreamer
6. Rock-a-Bye Baby
7. Canon in D – Pachelbel
8. Lullaby – Mozart
9. To a Wild Rose – MacDowell
10. Claire de Lune – Debussy
11. Air for the G String – Bach
12. Adagio from Winter – Vivaldi

CARE & MAINTENANCE

1. Keep the unit clean by wiping it with a slightly damp cloth.
2. Keep the unit out of direct sunlight and heat source.
3. Remove the batteries when the unit is not in use for an extended period of time.
4. Do not drop the unit on hard surfaces and do not expose the unit to moisture or water.

TROUBLESHOOTING

If for some reason the program/activity stops working or malfunctions, please follow these steps:

1. Turn the unit **OFF**.
2. Interrupt the power supply by removing the batteries.
3. Let the unit stand for a few minutes, then replace the batteries.
4. Turn the unit **ON**. The unit should now be ready to play again.
5. If the product still does not work, replace with a new set of batteries.

If the problem persists, please call our Consumer Services Department at 1-800-521-2010 in the U.S. or 1-877-352-8697 in Canada, and a service representative will be happy to help you.

IMPORTANT NOTE:

Creating and developing **Infant Learning** products is accompanied by a responsibility that we at **VTech**[®] take very seriously. We make every effort to ensure the accuracy of the information, which forms the value of our products. However, errors sometimes can occur. It is important for you to know that we stand behind our products and encourage you to call our Consumer Services Department at 1-800-521-2010 in the U.S. or 1-877-352-8697 in Canada, with any problems and/or suggestions that you might have. A service representative will be happy to help you.

Note:

This equipment has been tested and found to comply with the limits for a Class B digital device, pursuant to Part 15 of the FCC Rules. These limits are designed to provide reasonable protection against harmful interference in a residential installation. This equipment generates, uses and can radiate radio frequency energy and, if not installed and used in accordance with the instructions, may cause harmful interference to radio communications. However, there is no guarantee that interference will not occur in a particular installation. If this equipment does cause harmful interference to radio or television reception, which can be determined by turning the equipment off and on, the user is encouraged to try to correct the interference by one or more of the following measures:

- Reorient or relocate the receiving antenna
- Increase the separation between the equipment and receiver
- Connect the equipment into an outlet on a circuit different from that to which the receiver is connected
- Consult the dealer or an experienced radio/TV technician for help

THIS DEVICE COMPLIES WITH PART 15 OF THE FCC RULES. OPERATION IS SUBJECT TO THE FOLLOWING TWO CONDITIONS:
(1) THIS DEVICE MAY NOT CAUSE HARMFUL INTERFERENCE, AND
(2) THIS DEVICE MUST ACCEPT ANY INTERFERENCE RECEIVED, INCLUDING INTERFERENCE THAT MAY CAUSE UNDESIRE OPERATION.

THIS CLASS B DIGITAL APPARATUS COMPLIES WITH CANADIAN ICES-003.

CET APPAREIL NUMÉRIQUE DE LA CLASSE B EST CONFORME À LA NORME NMB-003 DU CANADA.