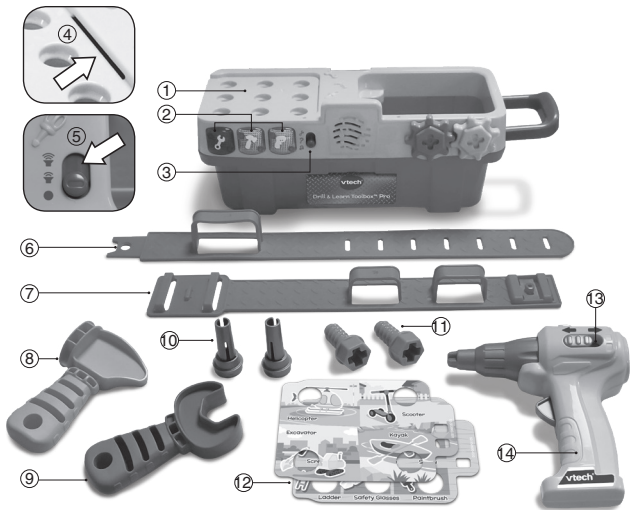


INTRODUCTION

Thank you for purchasing the **Drill & Learn Toolbox™ Pro!**

Get ready for fix-it fun with the drill, hammer and wrench while learning cool tool facts, numbers, colors, objects and more. Use the project cards, follow the instructions and enjoy the imaginative repair play. Put on your tool belt to take the fun on the go!



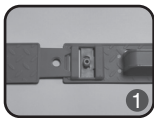
- | | |
|--------------------------|--------------------|
| ① Holes | ⑧ Hammer |
| ② Tool Buttons | ⑨ Wrench |
| ③ Mode Selector | ⑩ Nails |
| ④ Card Slot | ⑪ Screws |
| ⑤ On/Off/Volume Selector | ⑫ Project Cards |
| ⑥ Belt Piece A | ⑬ Direction Switch |
| ⑦ Belt Piece B | ⑭ Drill |

INCLUDED IN THE PACKAGE

- **Drill & Learn Toolbox™ Pro**
- 2 project cards
- 1 tool belt
- 1 drill
- 1 hammer
- 1 wrench
- 2 screws
- 2 nails
- Quick Start Guide

Tool Belt Assembly

1. Slide the end of Belt Piece A through the slots on the end of Belt Piece B.
2. Snap together.
3. Buckle the belt on the child's waist to play.



WARNING

All packing materials such as tape, plastic sheets, packaging locks, removable tags, cable ties, cords and packaging screws are not part of this toy, and should be discarded for your child's safety.

NOTE

Please save this Instruction Manual as it contains important information.

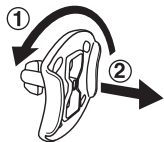
ATTENTION

Pour la sécurité de votre enfant, débarrassez-vous de tous les produits d'emballage tels que rubans adhésifs, feuilles de plastique, attaches, étiquettes, cordons et vis d'emballage. Ils ne font pas partie du jouet.

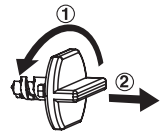
NOTE

Il est conseillé de sauvegarder ce manuel d'utilisation car il comporte des informations importantes.

Unlock the Packaging Locks



- ① Rotate the packaging locks 90 degrees counterclockwise.
- ② Pull out the packaging locks and discard.



- ① Turn the packaging locks counterclockwise several times.
- ② Pull out and discard the packaging locks.

WARNING

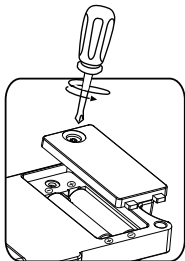
Do not insert anything other than the included screws or nails into the holes of the toolbox. Doing so may damage the toolbox.



GETTING STARTED

Battery Removal and Installation

1. Make sure the unit is turned **Off**.
2. Find the battery cover located on the bottom of the unit, use a screwdriver to loosen the screw and then open the battery cover.
3. Remove old batteries by pulling up on one end of each battery.
4. Install 2 new AA size (AM-3/LR6) batteries following the diagram inside the battery box. (For best performance, alkaline batteries or fully charged Ni-MH rechargeable batteries are recommended.)
5. Replace the battery cover and tighten the screw to secure.



WARNING:

Adult assembly required for battery installation.
Keep batteries out of reach of children.



ATTENTION :

Les piles ou accumulateurs doivent être installés par un adulte.
Tenir les piles ou accumulateurs hors de portée des enfants.

IMPORTANT: BATTERY INFORMATION

- Insert batteries with the correct polarity (+ and -).
- Do not mix old and new batteries.
- Do not mix alkaline, standard (carbon-zinc) or rechargeable batteries.
- Only batteries of the same or equivalent type as recommended are to be used.
- Do not short-circuit the supply terminals.
- Remove batteries during long periods of non-use.
- Remove exhausted batteries from the toy.
- Dispose of batteries safely. Do not dispose of batteries in fire.

RECHARGEABLE BATTERIES:

- Remove rechargeable batteries from the toy before charging.
- Rechargeable batteries are only to be charged under adult supervision.
- Do not charge non-rechargeable batteries.

IMPORTANT : INFORMATIONS CONCERNANT LES PILES

Les piles fournies avec le produit permettent de tester le jouet en magasin mais ne sont pas des piles longue durée.

- Mettre en place les piles ou les accumulateurs en respectant les polarités + et -.
- Ne pas mélanger des piles ou des accumulateurs neufs avec des usagés.
- Ne pas mélanger différents types de piles : alcalines, zinc-carbone et rechargeables.
- Seules des piles du type recommandé doivent être utilisées.
- Ne pas mettre les bornes d'une pile ou d'un accumulateur en court-circuit (en reliant directement le + et le -).
- Retirer les piles ou les accumulateurs en cas de non-utilisation prolongée.
- Enlever les piles ou les accumulateurs usagés du jouet.
- Ne les jeter ni au feu ni dans la nature.

PILES RECHARGEABLES

- Enlever, lorsque c'est possible, les accumulateurs du jouet pour les recharger.
- Les accumulateurs ne doivent être chargés que sous la surveillance d'un adulte.
- Ne pas tenter de recharger des piles non rechargeables.

ACTIVATING NORMAL PLAY MODE

When the product is taken out of the packaging, turn it on and insert a **Project Card**. You will hear a beep and a voice confirming you are in Normal Play mode.

PRODUCT FEATURES

1. On/Off/Volume Selector

To turn the unit **On** or adjust the volume, slide the selector to Low or High. To turn the unit **Off**, slide the selector to **Off**.



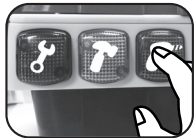
2. Mode Selector

Slide the **Mode Selector** to choose an activity. Choose from three activities.



3. Tool Buttons

Press the **Tool Buttons** to learn about tools, answer questions or listen to cheerful songs.



4. Holes

Drill the **Screws** or hammer the **Nails** into the **Holes** to play or answer questions.



5. Project Cards

Insert one of the two double-sided **Project Cards** into the **Card Slot** to explore tools and to hear fix-it songs about tools, numbers, vehicles and housewares.



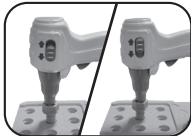
6. Tool Belt

Insert the tools into the loops on the **Tool Belt** for fix-it fun.



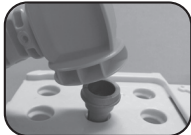
7. Drill

Use the **Drill** to drill **Screws** into the **Holes**. The **Drill** can turn clockwise or counterclockwise by sliding the **Direction Switch** on the side.



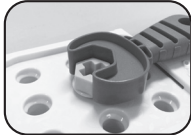
8. Hammer

Use the **Hammer** to insert the **Nails** into the **Holes**.



9. Wrench

Use the **Wrench** to insert the **Screws** into the **Holes**.



10. Automatic Shut-Off

To prolong battery life, the **Drill & Learn Toolbox™ Pro** will shut off automatically after several minutes without input. The unit can be turned on again by sliding the **On/Off/Volume Selector** or sliding the **Mode Selector**.

The unit will also automatically turn off when the batteries are very low.

ACTIVITIES

1. Free Play Mode

Press the three **Tool Buttons** to learn about tools, sounds and colors. Use the **Drill**, **Hammer** or **Wrench** to drill **Screws** or hammer **Nails** into the **Holes**. If no **Project Card** is inserted, you will hear sounds and phrases. If a **Project Card** is inserted, you can learn about numbers, more than or less than, tools, colors, vehicles, objects and more.

After every five actions (drill a **Screw**, hammer a **Nail**, etc.), a song plays in celebration.

2. Challenge Mode

Tool time! Listen to the questions and answer them by using the tools or pressing the **Tool Buttons**. When all the **Screws** and **Nails** are inserted into the **Holes**, pull them out and continue to answer other questions.

3. Music Fun Mode

Press the **Tool Buttons** or insert a **Project Card** to hear songs about tools, numbers and objects. Listen to the fun melodies by drilling a **Screw** or hammering a **Nail** into the **Hole**.

SONG LYRICS

Tools Card

We are fixers with lots of tools

Safety first, that's the rule.

No job is too big,

No job is too small,

With the right tools,

We can do them all!

Numbers Card

One, two, three

Count with me.

Four, five, six

What should we fix?

Seven, eight, nine

We're fixin' all the time.

Vehicles Card

Scout, fly, zig and zag

In the boat, paddle, paddle

The excavator digs, digs,

All go fast and slow

And all need special care to fix.

Housewares Card

Well, it might be a little bit noisy

All of our repairs

Fixing things around the house

Well, it takes work and skill

When it's fixed, what a thrill!

Wrench Song

Twist and turn the bolt to learn

How to use the wrench

To the right, right, right

To make it tight, tight, tight

To the left, left, left

To make it loose, loose, loose.

Hammer Song

Hammers and nails

Go together like

Shells on snails

Or water and whales

Or colors on peacock tails.

Drill Song

When we use the drill

Hold it steady, hold it still

Line it up with the screw

Squeeze the drill and vroom, vroom, vroom!

CARE & MAINTENANCE

1. Keep the unit clean by wiping it with a slightly damp cloth.
2. Keep the unit out of direct sunlight and away from any direct heat source.
3. Remove the batteries if the unit will not be in use for an extended period of time.
4. Do not drop the unit on hard surfaces and do not expose the unit to moisture or water.

TROUBLESHOOTING

If for some reason the unit stops working or malfunctions, please follow these steps:

1. Turn the unit **Off**.
2. Interrupt the power supply by removing the batteries.
3. Let the unit stand for a few minutes, then replace the batteries.
4. Turn the unit **On**. The unit should now be ready to play again.
5. If the unit still does not work, install a new set of batteries.

IMPORTANT NOTE

If the problem persists, please call our **Consumer Services Department** at **1-800-521-2010** in the U.S., **1-877-352-8697** in Canada, or by going to our website **vtechkids.com** and filling out our **Contact Us** form located under the **Customer Support** link. Creating and developing VTech products is accompanied by a responsibility that we take very seriously. We make every effort to ensure the accuracy of the information, which forms the value of our products. However, errors sometimes can occur. It is important for you to know that we stand behind our products and encourage you to contact us with any problems and/or suggestions you might have. A service representative will be happy to help you.

NOTE

This equipment has been tested and found to comply with the limits for a Class B digital device, pursuant to Part 15 of the FCC Rules. These limits are designed to provide reasonable protection against harmful interference in a residential installation. This equipment generates, uses and can radiate radio frequency energy and, if not installed and used in accordance with the instructions, may cause harmful interference to radio communications. However, there is no guarantee that interference will not occur in a particular installation. If this equipment does cause harmful interference to radio or television reception, which can be determined by turning the equipment off and on, the user is encouraged to try to correct the interference by one or more of the following measures:

- Reorient or relocate the receiving antenna.
- Increase the separation between the equipment and receiver.
- Connect the equipment into an outlet on a circuit different from that to which the receiver is connected.
- Consult the dealer or an experienced radio/TV technician for help.

CAUTION

Changes or modifications not expressly approved by the party responsible for compliance could void the user's authority to operate the equipment.

Supplier's Declaration of Conformity

47 CFR § 2.1077 Compliance Information

Trade Name: VTech®
Model: 5509
Product Name: Drill & Learn Toolbox™ Pro
Responsible Party: VTech Electronics North America, L.L.C.
Address: 1156 W. Shure Drive, Suite 200
Arlington Heights, IL 60004
Website: vtechkids.com

THIS DEVICE COMPLIES WITH PART 15 OF THE FCC RULES. OPERATION IS SUBJECT TO THE FOLLOWING TWO CONDITIONS: (1) THIS DEVICE MAY NOT CAUSE HARMFUL INTERFERENCE, AND (2) THIS DEVICE MUST ACCEPT ANY INTERFERENCE RECEIVED, INCLUDING INTERFERENCE THAT MAY CAUSE UNDESIRED OPERATION.

CAN ICES-003(B)/NMB-003(B)

**Visit our website for more
information about our products,
downloads, resources and more.**

vtechkids.com

vtechkids.ca

Read our complete warranty policy online at
vtechkids.com/warranty
vtechkids.ca/warranty

