

**vtech**<sup>®</sup>

# Instruction Manual

## Kidi★Star *DJ MIXER*<sup>™</sup>



91-004004-000 US CA

# INTRODUCTION

Thank you for purchasing the **KidiStar DJ Mixer™**. Get in the DJ booth and create your own custom music mixes! Customize the 15 included songs or play along with your own music (external music player not included). Jam, scratch and mix it up – you're the star!



- |                                   |                              |   |
|-----------------------------------|------------------------------|---|
| <b>1</b> Vocal Track Button       | <b>9</b> Audio-Out Jack      | <b>17</b> Custom Sound Effects Buttons        |
| <b>2</b> Line-In Button           | <b>10</b> AC Adapter Jack    | <b>18</b> Selection Buttons (Left, Right, OK) |
| <b>3</b> Bluetooth Input Button   | <b>11</b> Line-In Jack       | <b>19</b> Party Light On/Off Switch           |
| <b>4</b> Bluetooth Connect Button | <b>12</b> Mode Buttons       | <b>20</b> Party Light Mode Selector           |
| <b>5</b> Power Button             | <b>13</b> Style Button       | <b>21</b> Volume Control                      |
| <b>6</b> Turntable                | <b>14</b> Sound Grid Buttons | <b>22</b> Crossfader                          |
| <b>7</b> Pause Button             | <b>15</b> Preset SFX Buttons | <b>23</b> Tempo Buttons                       |
| <b>8</b> Turntable Effect Buttons | <b>16</b> Microphone         |   |

# INCLUDED IN THE PACKAGE

- KidiStar DJ Mixer™
- Quick Start Guide

## WARNING

All packing materials such as tape, plastic sheets, packaging locks, removable tags, cable ties, cords and packaging screws are not part of this toy, and should be discarded for your child's safety.

## NOTE

Please save this Instruction Manual as it contains important information.

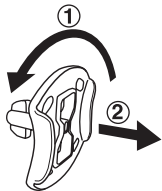
## ATTENTION

Pour la sécurité de votre enfant, débarrassez-vous de tous les produits d'emballage tels que rubans adhésifs, feuilles de plastique, attaches, étiquettes, cordons et vis d'emballage. Ils ne font pas partie du jouet.

## NOTE

Il est conseillé de sauvegarder ce manuel d'instructions car il comporte des informations importantes.

## Unlock the Packaging Locks



- ① Rotate the packaging locks 90 degrees counterclockwise.
- ② Pull out the packaging locks.

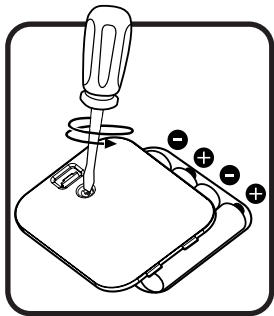
# GETTING STARTED

## NOTE

This product is in Try-me mode in the packaging. In DJ Party mode (DJ PARTY), press and hold **Custom Sound Effect Button #5** for three seconds to exit Try-Me mode. If the unit powers down during play, please install a new set of batteries.

## Battery Removal and Installation

1. Make sure the unit is turned **Off**.
2. Find the battery cover located on the back of the unit, use a screwdriver to loosen the screw and then open the battery cover.
3. Remove old batteries by pulling up on one end of each battery.
4. Install 4 new AA (AM-3/LR6) batteries following the diagram inside the battery box. (For best performance, alkaline batteries or fully charged Ni-MH rechargeable batteries are recommended).
5. Replace the battery cover and tighten the screw to secure.



## WARNING:

Adult assembly required for battery installation.  
Keep batteries out of reach of children.



## ATTENTION :

Les piles ou accumulateurs doivent être installés par un adulte.  
Tenir les piles ou accumulateurs hors de portée des enfants.

# BATTERY NOTICE

- Insert batteries with the correct polarity (+ and -).
- Do not mix old and new batteries.
- Do not mix alkaline, standard (carbon-zinc) or rechargeable batteries.
- Only batteries of the same or equivalent type as recommended are to be used.
- Do not short-circuit the supply terminals.
- Remove batteries during long periods of non-use.
- Remove exhausted batteries from the toy.
- Dispose of batteries safely. Do not dispose of batteries in fire.

## **RECHARGEABLE BATTERIES:**

- Remove rechargeable batteries from the toy before charging.
- Rechargeable batteries are only to be charged under adult supervision.
- Do not charge non-rechargeable batteries.

# MISE EN GARDE

Les piles fournies avec le produit permettent de tester le jouet en magasin mais ne sont pas des piles longue durée.

- Mettre en place les piles ou les accumulateurs en respectant les polarités + et –.
- Ne pas mélanger des piles ou des accumulateurs neufs avec des usagés.
- Ne pas mélanger différents types de piles : alcalines, zinc-carbone et rechargeables.
- Seules des piles du type recommandé doivent être utilisées.
- Ne pas mettre les bornes d'une pile ou d'un accumulateur en court-circuit (en reliant directement le + et le –).
- Retirer les piles ou les accumulateurs en cas de non-utilisation prolongée.
- Enlever les piles ou les accumulateurs usagés du jouet.
- Ne les jeter ni au feu ni dans la nature.

## **PILES RECHARGEABLES :**

- Enlever, lorsque c'est possible, les accumulateurs du jouet pour les recharger.
- Les accumulateurs ne doivent être chargés que sous la surveillance d'un adulte.
- Ne pas tenter de recharger des piles non rechargeables.

## POWER ADAPTER CONNECTION

- Make sure your **KidiStar DJ Mixer™** is turned off.
- Locate the **AC Adapter Jack** on the side of the unit.
- Connect an AC adapter (not included) to the **AC Adapter Jack**.
- Plug the adapter into a power outlet.
- Press the **Power Button** to turn the system **On**.

Note: When the toy is not going to be used for an extended period of time, unplug the adapter.

## TRANSFORMER SAFETY NOTICE

- Using a 3.5mm AC 6V power adapter (not included) that complies with EN61558 is recommended.
- This toy should only be used with a transformer for toys.
- The transformer is not a toy.
- This toy is not intended for use by children under 3 years old.
- Do not connect the toy to more than the recommended number of power supplies.
- Never clean a plugged-in toy with liquid.
- Please regularly examine the transformer, checking for damage to the cord, plug, transformer or other parts. Do not use the transformer if there is any damage to it.

# PRODUCT FEATURES

## 1. Power Button

Press the **Power Button** to power **On** the unit. Press the button again to power **Off** the unit.



## 2. Line-In Jack

Connect an external music player here using a 3.5mm cable (cable and music player not included).



## 3. Audio-Out Jack

Connect the mixer to external speakers or headphones using the **Audio-Out Jack** (cable not included).



## 4. AC Adapter

Connect the mixer to AC power (adapter not included).



## 5. Automatic Shut-Off

To preserve battery life, the KidiStar DJ Mixer™ will automatically turn off after 10 minutes without input. The unit can be turned on again by pressing the **Power Button**.



# Modes

## DJ Party

Create custom mixes with any of the 15 built-in tracks, adjusting all aspects of each song, or play along with your own music.

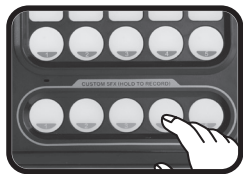


## Audio Controls

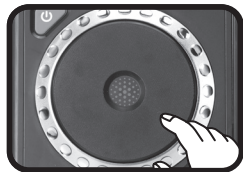
- Use the **Sound Grid Buttons** to choose different instruments to play. Each column triggers one instrument at a time.
- Press the **Preset Sound Effects Buttons** to play built-in sound effects.
- Press the **Style Button** to change the track's style. The **Sound Grid** and **Preset Sound Effects Buttons** will adjust what they play accordingly.



- Press and hold any of the **Custom Sound Effect Buttons** to record your own short sound effect and assign it to one of the five buttons. When the button lights up, it is recording. Release the button when you're finished recording. Press the button again to hear your custom sound effect.



- Scratch the **Turntable** back and forth to add scratching effects to your music. Press a **Turntable Effect Button** to change the sound effect the turntable makes.



- Press the **Vocal Track Button** to add or remove singing from the mix for all built-in songs.



- Press the **Line-In Button** to play audio from a device plugged in to the **Line-In Jack** (external music player and cable not included).



- Press the **Bluetooth Connect Button** to connect to a nearby device via Bluetooth connection. Once the device is paired, press the **Bluetooth Input Button** to choose this as the audio input source.



#### NOTE

If your music device does not support a PIN code connection, you can disable the PIN by pressing the selection buttons.

Please use the PIN-secured connection when possible. VTech strongly recommends keeping the PIN security on for the use of **Bluetooth** transmission to avoid any connection by an unauthorized device. The disabling of the PIN security should only be used when the connection of an external device with PIN security is impossible. The use of the toy when PIN security has been disabled should be under the supervision of an adult.

- Use the **Crossfader** to adjust the volume balance between your selected audio source and the system's built-in sounds.



#### NOTE

When playing audio wirelessly through the system, we suggest you only adjust your smart device's volume using the **Crossfader** on the **KidiStar DJ Mixer™** system. For best performance, set your device's volume to 100% with the **Crossfader** in the middle position to get started.

- Use the **Tempo Control Buttons** to adjust the tempo of built-in audio tracks.



- Press the **Pause Button** to pause or resume the music.



- Use the **Volume Control Slider** to adjust the overall system volume.



## Party Light Control

Use the **Party Light On/Off Button** to switch the light on or off.



## Studio

In **Studio** mode you can either record or play back tracks using the **Left**, **Right**, and **OK Buttons**.



## Record

Press the **OK Button** to enter record mode and select to which of the three slots you would like to save your mix. After a count down, recording will begin. The system will record the sound from the **Turntable, Vocal Track, Sound Grid Buttons**, preset and custom sound effects (see **note** below), **Crossfader** actions and tempo changes. When you finish recording, press the **OK Button** to save your mix.



## NOTE

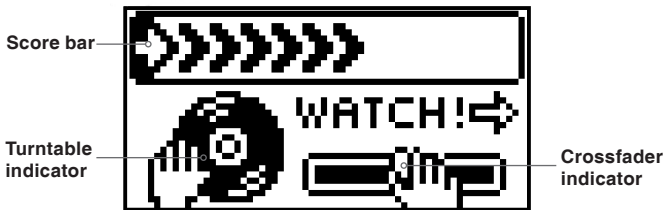
If you create new custom sound effects at a later time, when you play back tracks recorded earlier, any custom sound effects in the original recordings will trigger the system's current custom effects.

## Playback

Choose the track you would like to play with the **Left**, **Right** and **OK Buttons**.

## Academy

See how well you can repeat the patterns. When you play back a rhythm with 75% or more notes correct, your score at the top of the screen will increase. The patterns include the **Crossfader** and **Turntable** controls as well: watch the screen to see when they're indicated. A total of 11 patterns will appear in each game. Get nine or more patterns correct to unlock secret animations.



## CARE & MAINTENANCE

1. Keep the unit clean by wiping it with a slightly damp cloth.
2. Keep the unit out of direct sunlight and away from any direct heat sources.
3. Remove the batteries if the unit will not be in use for an extended period of time.
4. Do not drop the unit on hard surfaces and do not expose the unit to excess moisture.

## TROUBLESHOOTING

If for some reason the unit stops working or malfunctions, please follow these steps:

1. Interrupt the power supply by removing the batteries.
2. Let the unit stand for a few minutes, then replace the batteries.
3. The unit should now be ready to use again.
4. If the unit still does not work, install a new set of batteries.

### IMPORTANT NOTE

If the problem persists, please call our **Consumer Services Department** at **1-800-521-2010** in the U.S., **1-877-352-8697** in Canada, or visit our website **vtechkids.com** and fill out our **Contact Us** form located under the **Customer Support** link. Creating and developing VTech products is accompanied by a responsibility that we take very seriously. We make every effort to ensure the accuracy of the information, which forms the value of our products. However, errors sometimes can occur. It is important for you to know that we stand behind our products and encourage you to contact us with any problems and/or suggestions you might have. A service representative will be happy to help you.

This device contains license-exempt transmitter(s)/receiver(s) that comply with Innovation, Science and Economic Development Canada's license-exempt RSS(s). Operation is subject to the following two conditions:

(1) This device may not cause interference; and (2) This device must accept any interference, including interference that may cause undesired operation of the device.

L'émetteur/récepteur exempt de licence contenu dans le présent appareil est conforme aux CNR d'Innovation, Sciences et Développement économique Canada applicables aux appareils radio exempts de licence. L'exploitation est autorisée aux deux conditions suivantes :

(1) l'appareil ne doit pas produire de brouillage, et (2) l'utilisateur de l'appareil doit accepter tout brouillage radio électrique subi, même si le brouillage est susceptible d'en compromettre le fonctionnement.”

## **Radiation Exposure Statement**

This equipment complies with FCC/IC radiation exposure limits set forth for an uncontrolled environment. This equipment should be installed and operated with minimum distance 7.8 inches between the radiator and your body.

## **Bluetooth Statement**

The Bluetooth® word mark and logos are registered trademarks owned by the Bluetooth SIG, Inc. and any use of such marks by VTech is under license. Other trademarks and trade names are those of their respective owners.



## NOTE

This equipment has been tested and found to comply with the limits for a Class B digital device, pursuant to Part 15 of the FCC Rules. These limits are designed to provide reasonable protection against harmful interference in a residential installation. This equipment generates, uses and can radiate radio frequency energy and, if not installed and used in accordance with the instructions, may cause harmful interference to radio communications. However, there is no guarantee that interference will not occur in a particular installation. If this equipment does cause harmful interference to radio or television reception, which can be determined by turning the equipment off and on, the user is encouraged to try to correct the interference by one or more of the following measures:

- Reorient or relocate the receiving antenna.
- Increase the separation between the equipment and receiver.
- Connect the equipment into an outlet on a circuit different from that to which the receiver is connected.
- Consult the dealer or an experienced radio/TV technician for help.

## CAUTION

Changes or modifications not expressly approved by the party responsible for compliance could void the user's authority to operate the equipment.

<b>Player</b>	
Maximum output voltage	$\leq 150\text{mV}$

<b>Lecteur</b>	
Tension maximale de sortie	$\leq 150\text{mV}$

**Supplier's Declaration of Conformity**  
47 CFR § 2.1077 Compliance Information

Trade Name: VTech®  
Model: 5473  
Product Name: KidiStar DJ Mixer™  
Responsible Party: VTech Electronics North America, LLC  
Address: 1156 W. Shure Drive, Suite 200  
Arlington Heights, IL 60004  
Website: vtechkids.com

THIS DEVICE COMPLIES WITH PART 15 OF THE FCC RULES. OPERATION IS SUBJECT TO THE FOLLOWING TWO CONDITIONS: (1) THIS DEVICE MAY NOT CAUSE HARMFUL INTERFERENCE, AND (2) THIS DEVICE MUST ACCEPT ANY INTERFERENCE RECEIVED, INCLUDING INTERFERENCE THAT MAY CAUSE UNDESIRE OPERATION.

CAN ICES-003(B)/NMB-003(B)

**Visit our website for more  
information about our products,  
downloads, resources and more.**

***vtechkids.com***  
***vtechkids.ca***

Read our complete warranty policy online at  
***vtechkids.com/warranty***  
***vtechkids.ca/warranty***

