

# vtech®

## User's Manual

# TOTE & GO LAPTOP PLUS™



© 2006 VTECH  
Printed in China  
91-02163-005 (美)

*Dear Parent,*

*At VTech® we know how important the first day of school is for your child. To help prepare preschoolers for this important event, VTech® has developed the **Preschool Learning™** series of interactive toys.*

***Preschool Learning™** features fun characters and inviting school themes that use technology to capture a child's attention and teach important preschool skills like spelling, counting and the alphabet. These vital skills are taught in a way that's both fun and highly engaging to maintain a child's interest. Children will also be introduced to fun school subjects such as art class, music class and even recess! With **Preschool Learning™**, learning is fun from day one!*

*At VTech® we know that a child has the ability to do great things. That's why all of our electronic learning products are uniquely designed to develop a child's mind and allow them to learn to the best of their ability. We thank you for trusting VTech® with the important job of helping your child learn and grow!*

*Sincerely,*

*Your Friends at VTech®*

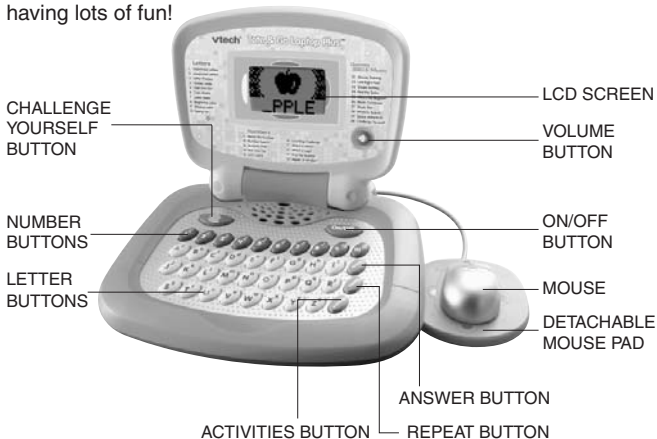
*To learn more about **Preschool Learning™** and other VTech® toys, visit*

*[www.vtechkids.com](http://www.vtechkids.com)*

# INTRODUCTION

Thank you for purchasing the **VTech® Tote & Go Laptop Plus™** learning toy!

The **VTech® Tote & Go Laptop Plus™** is a fun laptop that introduces age-appropriate curriculum through 30 engaging activities. A friendly monkey character encourages pre-schoolers as they learn letters, numbers, music, mouse training and much more! With cheerful music and fun games, your child will develop early computer skills while having lots of fun!



## INCLUDED IN THIS PACKAGE

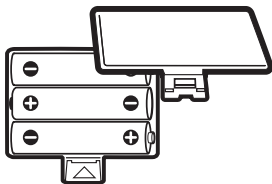
- One **VTech® Tote & Go Laptop Plus™** learning toy
- One user's manual

**WARNING:** All packing materials such as tape, plastic sheets, wire ties and tags are not part of this toy, and should be discarded for your child's safety.

# GETTING STARTED

## BATTERY INSTALLATION

1. Make sure the unit is turned OFF.
2. Locate the battery cover on the bottom of the unit. Open the battery cover.
3. Install 3 new “AA” (UM-3/LR6) batteries following the diagram inside the battery box. (The use of new alkaline batteries is recommended for maximum performance.)
4. Replace the battery cover.



## BATTERY NOTICE


- Non-rechargeable batteries are not to be recharged.
- Rechargeable batteries are to be removed from the toy before being charged (if removable).
- Rechargeable batteries are only to be charged under adult supervision (if removable).
- Different types of batteries or new and used batteries are not to be mixed.
- Only batteries of the same or equivalent type as recommended are to be used.
- Batteries are to be inserted with the correct polarity.
- Exhausted batteries are to be removed from the toy.
- The supply terminals are not to be short-circuited.
- The toy is not to be connected to more than recommended number of power supplies.
- Do not dispose of batteries in fire.

**NOTE:** If the unit suddenly stops working or the sound becomes weak, turn the unit off for 15 seconds, then turn it back on. If the problem persists it may be caused by weak batteries. Please install a new set of batteries and try the unit again.

**WE DO NOT RECOMMEND THE USE OF RECHARGEABLE BATTERIES.**

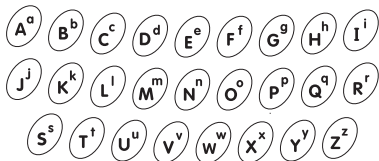
## PRODUCT FEATURES

### 1. ON/OFF BUTTON

Press the  button to turn the unit on. Press it again to turn the unit off.

### 2. LETTER BUTTONS

Press the 26 **LETTER BUTTONS** to input letters in letter-related activities.




### 3. NUMBER BUTTONS

Press the ten **NUMBER BUTTONS** to input numbers in number-related activities.




### 4. ACTIVITIES BUTTON


Press the  button to go to the main menu to select an activity.

It is also possible to select activities directly with the number buttons. Press the number button from the main menu to activate this function.


## 5. REPEAT BUTTON


Press the  button to repeat the current question or instruction.

## 6. ANSWER BUTTON


Press the  button to get the correct answer in most activities.

## 7. VOLUME BUTTON

Press the  button then push the mouse left or right to adjust the volume.

Press the  button then move the mouse down, then left or right to adjust the background music on or off.

## 8. CHALLENGE YOURSELF BUTTON

Press the  button for a new challenge. You will be randomly given each of the previous activities one by one to play.

## 9. MOUSE

Move the mouse left, right, forwards and backwards to select an answer in related activities.

Press the mouse to confirm an answer in related activities.

Move the mouse to the four corners of the screen to see some fun animations.

## 10. AUTOMATIC SHUT-OFF

To preserve battery life, the **VTech® Tote & Go Laptop Plus™** will automatically turn off after several minutes without input. The unit can be turned on again by pressing the  button.



# ACTIVITIES

## LETTERS

### 1. Uppercase (capital) Letters

An uppercase letter appears on the screen, type the correct letter on the keyboard to hear the letter and related word identified.

### 2. Lowercase (small) Letters

A lowercase letter appears on the screen, type the correct letter on the keyboard to hear the letter and related word identified.

### 3. Letter Phonics

Press a letter button to hear its phonic sound identified.

### 4. Hidden Letter

A letter hidden in a picture is shown on the screen, identify it and then type the correct letter on the keyboard.

### 5. Odd One Out

The screen will show several letters in the same letter case except for one which is in a different letter case. Find the letter that is in a different letter case and type the letter on the keyboard or select it by moving the mouse and pressing the mouse button to confirm.

### 6. Case Match

A letter appears on the pin in a bowling game. Choose the matching bowling ball which will knock down the letter pin. You can type this letter on the keyboard or choose the correct letter by moving the mouse and pressing the mouse button to confirm.

### 7. Letter Order

Several letters line up in alphabetical order with the middle one missing. Press the letter button to find the one that completes the order.



## 8. **Beginning Letter**

A word with the first letter missing will appear on the screen. Type in the missing letter that completes the word.

## 9. **Missing Letter**

A word with a letter missing will appear on the screen. Type in the missing letter that completes the word.

## 10. **Typing Fun**

Letters appear from the left corner of the screen. Press the matching letter button to shoot the letter as soon as possible.

## **NUMBERS**

### 11. **Name the Number**

A number appears on the screen. Type the correct number on the keyboard to hear it identified.

### 12. **Number Search**

A group of numbers will be shown. Choose the correct number from the group by typing it on the keyboard or select it by moving the mouse and pressing the mouse button to confirm.

### 13. **Number Order**

Several numbers line up in number order with the middle one missing. Press the number button to find the one that completes the order.

### 14. **Kick One Out**

The screen will show several numbers in order except for one which is not in this order. Find the number that is not in order and type it on the keyboard or select it by moving the mouse and pressing the mouse button to confirm.

### 15. **Let's Count**

Some objects are counted one by one on screen. Answer the question by typing the number on the keyboard or select it from the options by moving the mouse and pressing the mouse button to confirm.



## 16. Counting Challenge

Some objects appear on screen. Count the objects and type your answer on the keyboard.

## 17. Which is More?

Two different numbers of objects appear on each side of the screen. Choose which side has more by moving the mouse and press the mouse button to confirm.

## 18. Which is Less?

Two different numbers of objects appear on each side of the screen. Choose which side has less by moving the mouse and press the mouse button to confirm.

## 19. Find the Number

A number is shown on a card, then the card is shuffled with some other cards. Watch carefully to find the correct card by moving the mouse and press the mouse button to confirm.

## 20. Bigger or Smaller?

Choose which number is bigger or smaller than the first number shown. You can type the answer on the keyboard or select it by moving the mouse and press the mouse button to confirm.

## GAMES & MUSIC

### 21. Mouse Training

The monkey is hurrying home! Use the mouse to guide the monkey through the maze.

### 22. Left / Right Path

Control the mouse to help the monkey jump left or right by following the instructions. Be careful not to fall into the water.

### 23. Shape Sorting

Four shapes appear on the screen. Find the different one by using the mouse and press the mouse button to confirm.



#### 24. **Find the Twins**

An animal appears on the screen, then the same animal with different patterns appears one by one. Find the matching animal by using the mouse and press the mouse button to confirm.

#### 25. **Who's the Biggest?**

Three different sizes of objects appear on the screen. Find the one that is the biggest by using the mouse and press the mouse button to confirm.

#### 26. **Shadow Search**

An object appears on the screen, then some shadows appear one by one. Find the object's shadow by using the mouse and press the mouse button to confirm.

#### 27. **Space Adventure**

The monkey goes on a space adventure and has to pass through the planet's cave to continue his journey. Help him navigate his spaceship by using the mouse.

#### 28. **Music Composer**

Type the note keys to make your own song and press the mouse confirm button to hear your composition.

#### 29. **Music box**

The monkey plays the piano after you select the melody from the keyboard. Select a melody by pressing one of the 10 note keys on the keyboard.

#### 30. **Challenge Yourself**

Are you ready for a challenge? You will be randomly given each of the previous activities one by one to play.

You can also press the **Challenge Yourself** Button for direct access to this activity.



## CARE & MAINTENANCE

1. Keep the unit clean by wiping it with a slightly damp cloth.
2. Keep the unit out of direct sunlight and away from any direct heat source.
3. Remove the batteries when the unit is not in use for an extended period of time.
4. Do not drop the unit onto a hard surface and do not expose the unit to moisture or water.

## TROUBLESHOOTING

1. If your **Tote & Go Laptop Plus™** stops working or does not turn on:
  - Check your batteries. Make sure the batteries are fresh and properly installed.
  - If you are still having problems, visit our website at [www.vtechkids.com](http://www.vtechkids.com) for troubleshooting tips.
2. If, when pressing the On/Off button, nothing happens:
  - Check to see that the batteries are aligned correctly
3. If you can't hear any sound:
  - Adjust the volume switch to adjust the sound level of the speaker.



## TECHNICAL SUPPORT

If you have a problem that cannot be solved by using this manual, we encourage you to visit us online or contact our Consumer Services Department with any problems and/or suggestions that you might have. A support representative will be happy to assist you.

Before requesting support, please be ready to provide or include the information below:

- The name of your product or model number (the model number is typically located on the back or bottom of your product).
- The actual error message or problem you are experiencing.
- The actions you took right before the error message or problem occurred.

**Internet:** [www.vtechkids.com](http://www.vtechkids.com)

**Phone:** 1-800-521-2010 in the U.S. or 1-877-352-8697 in Canada



## OTHER INFO

VTech® Electronics North America, L.L.C. and its suppliers assume no responsibility for any damage or loss resulting from the use of this handbook. VTech® Electronics North America, L.L.C. and its suppliers assume no responsibility for any loss or claims by third parties that may arise through the use of this software. VTech® Electronics North America, L.L.C. and its suppliers assume no responsibility for any damage or loss caused by deletion of data as a result of malfunction, dead battery, or repairs. Be sure to make backup copies of important data on other media to protect against data loss.

**COMPANY :** VTech® Electronics North America, L.L.C.

**ADDRESS :** 1155 W. Dundee Road, Suite 130, Arlington Heights, IL 60004, USA

**TEL NO.:** (847) 400-3600



**NOTE:** This equipment has been tested and found to comply with the limits for a Class B digital device, pursuant to Part 15 of the FCC Rules. These limits are designed to provide reasonable protection against harmful interference in a residential installation. This equipment generates, uses and can radiate radio frequency energy and, if not installed and used in accordance with the instructions, may cause harmful interference to radio communications. However, there is no guarantee that interference will not occur in a particular installation. If this equipment does cause harmful interference to radio or television reception, which can be determined by turning the equipment off and on, the user is encouraged to try to correct the interference by one or more of the following measures:

- Reorient or relocate the receiving antenna.
- Increase the separation between the equipment and receiver.
- Connect the equipment into an outlet on a circuit different from that to which the receiver is connected.
- Consult the dealer or an experienced radio/TV technician for help.

**Caution:** changes or modifications not expressly approved by the party responsible for compliance could void the user's authority to operate the equipment.



### IMPORTANT NOTE:

Creating and developing **VTech® Tote & Go Laptop Plus™** products is accompanied by a responsibility that we at **VTech®** take very seriously. We make every effort to ensure the accuracy of the information which forms the value of our products. However, errors sometimes can occur. It is important for you to know that we stand behind our products and encourage you to call our Consumer Services Department at 800-521-2010 in the U.S. or 1-877-352-8697 in Canada with any problems and/or suggestions that you might have. A service representative will be happy to help you.